



human med AG
Leader in water-jet technology



human med AG is an innovative medical technology company in the field of water-jet surgery with its headquarters in Schwerin / Germany. With its unique technology for hydrodynamic separation and harvesting of tissue and cells particularly from the subcutaneous fat tissue, the company is leading the international market of plastic-reconstructive and aesthetic surgery. human med can build on long-term experiences with water-jet assisted systems allowing precise control and selective tissue treatment. On this basis, the company developed the tissue-sparing method of Water-jet Assisted Liposuction and Lipotransfer (WAL) that is used in the aesthetic market, as well as plastic and reconstructive surgery for body-contouring, breast augmentation and reconstruction, and for treatment of soft tissue defects, scars and chronic wounds.

●● **body-jet® evo**

Premium Fat-Transfer and Body-Contouring

Satisfied Patients

●● **body-jet® evo**

Efficient. Versatile. Intuitive.
The premium class of water-jet assisted fat-transfer and body-contouring

Technical details
Dimensions in cm: 54 (W) x 60 (D) x 178 (H)
Weight in kg: 65
Power supply: 230 VAC, 6 A, 50 Hz
Safety class according IEC 60601-1: I
OP applicator safety class: BF
Approval: CE 0482
Device class acc. to Council Directive 93/42/EEC: II a

Provided by:



body-jet® is a registered trademark owned by human med AG, Germany. body-jet® technology is protected by U.S., European and other patents.



human med AG
Wilhelm-Hennemann-Str. 9
19061 Schwerin
Germany

Tel.: +49 (0)385 395 70 0
Fax: +49 (0)385 395 70 10
info@humanmed.com
www.humanmed.com

© Copyrights human med AG. 05/2016 REF 9001038





body-jet® evo

Your stake in the future of aesthetic, reconstructive and regenerative medicine

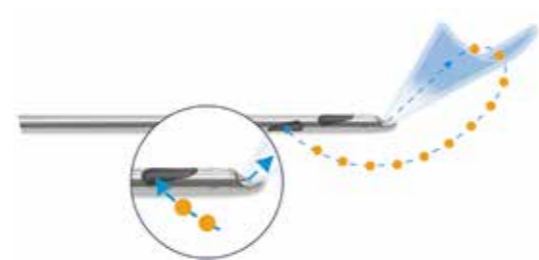
The innovative body-jet® evo represents the 2nd generation of Water-jet Assisted Liposuction devices (WAL). With the help of a fan-shaped, pulsating water-jet the fat can be gently separated away from the surrounding tissue and evacuated at the same time. Thanks to a novel drive system for the body-jet® evo the intensity and effectiveness of the water-jet can be adjusted to the user needs, ensuring a virtually pain-free treatment. The surrounding connective tissue, nerves and vascular structures remain undamaged resulting in higher patient safety, faster healing and less pain and

bruising. Moreover, the gentle effect of the water jet allows an easy and effective fat transfer even in patients with higher fat volumes without the need for time consuming processing which may lead to cell damage.

The body-jet® evo comprises a modern and standardized concept of operation with various preset parameters for liposuction and fat transfer as well as the option to adjust settings to the individual needs of the surgeon.

Advanced performance

Two in one



- aspiration and infiltration at the same time

Adjustable pulse effects



- fastest surgery time
- less pain for the patient
- efficient workflow

Easy to operate via touch screen



- easy and intuitive handling
- upgradable platform for further applications
- integrated help function

Flexible for liposuction and fat transfer



- standard system: for fast and precise fat collecting
- Biofill system: cost effective for harvesting small fat volumes

Ensuring highest fat quality



- for reliable harvesting of viable fat cells
- for lipofilling



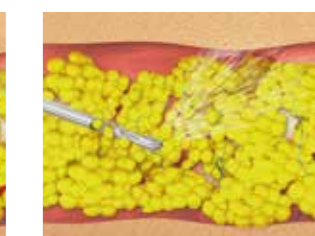
Phases of WAL (Waterjet-Assisted Liposuction)

Phase 1: Infiltration of the tissue, using gentle water-jet

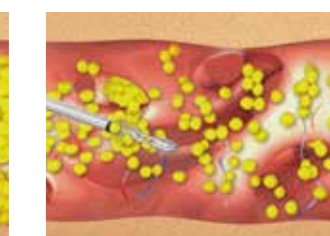


No tumescent technique

Phase 2: Simultaneous irrigation and aspiration Result



The fan-shaped water-jet flushes out small clusters of fat tissue. The water-jet moves easily through the toughest tissues. No need for aggressive cannula movement.



Low collateral damage to surrounding tissues

Pulse effects

Short



short and quick pulse

- most effective pulsation for guiding the cannula through fibrotic tissue
- easy to learn and to perform for skilled and unskilled users

Medium



basic pulsation mode

- most successful water-jet of the 1st body-jet® generation
- scientifically proven clinical results

Long



long pulsation mode

- fast, time-saving infiltration of large volume of solution
- designed for quick tissue expansion

Fat management



1st phase: Fast and gentle harvesting without tumescent technique

2nd phase: Direct fat collection using LipoCollector® or FillerCollector, no centrifugation or processing required

3rd phase: Extraction and direct re-injection of the fat into the recipient areas